



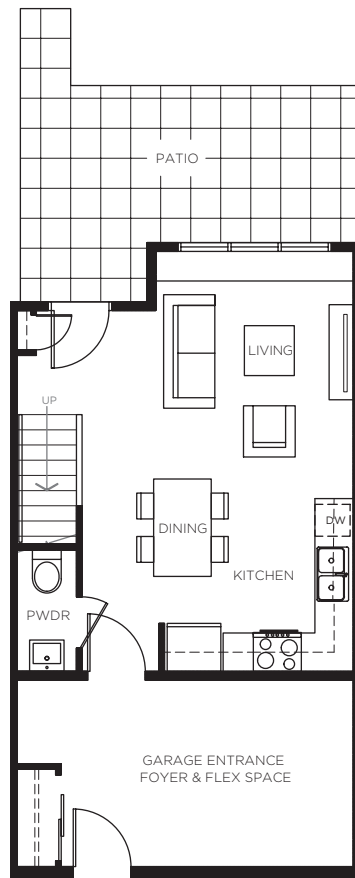
# SAVILE ROW

## PLAN C

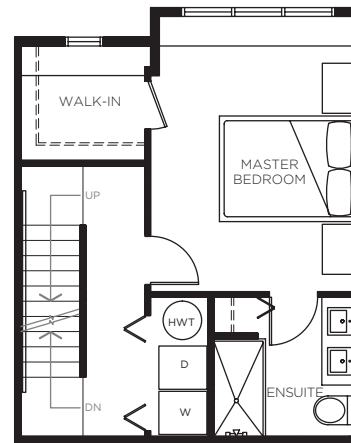
3 BEDROOM

LIVING: 1,151 - 1,162 SQ FT | PATIO: 164 SQ FT

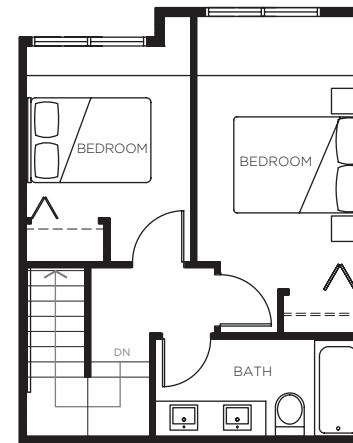
FOYER + FLEX SPACE: 190 SQ FT



LOWER LEVEL



MAIN LEVEL



UPPER LEVEL

[www.liveatsavilerow.com](http://www.liveatsavilerow.com)

The developer reserves the right to make modifications or substitutions should they be necessary. Any measurements provided are approximate only and should not be relied upon. E.&O.E.