

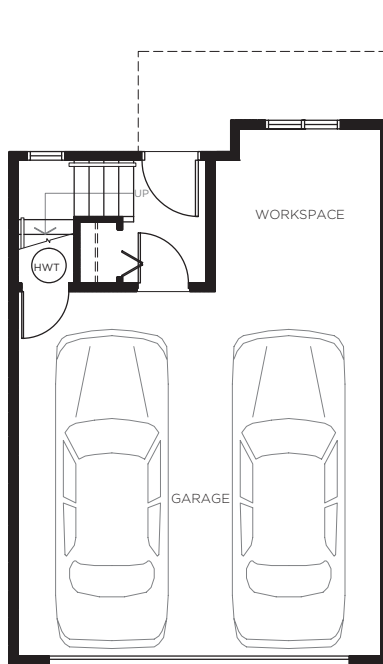


SAVILE ROW

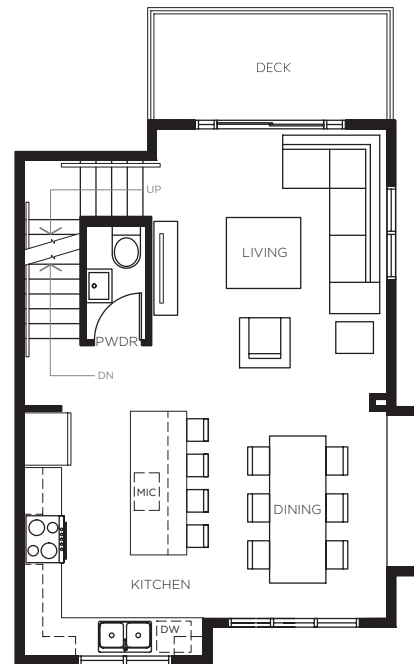
PLAN G3-END

3 BEDROOM + 2.5 BATH

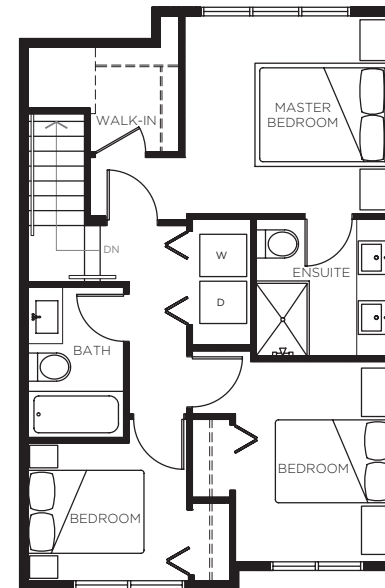
LIVING: 1,227 SQ FT | OUTDOOR: 235 SQ FT



LOWER LEVEL



MAIN LEVEL



UPPER LEVEL

www.liveatsavilerow.com

The developer reserves the right to make modifications or substitutions should they be necessary. Any measurements provided are approximate only and should not be relied upon. E.&O.E.